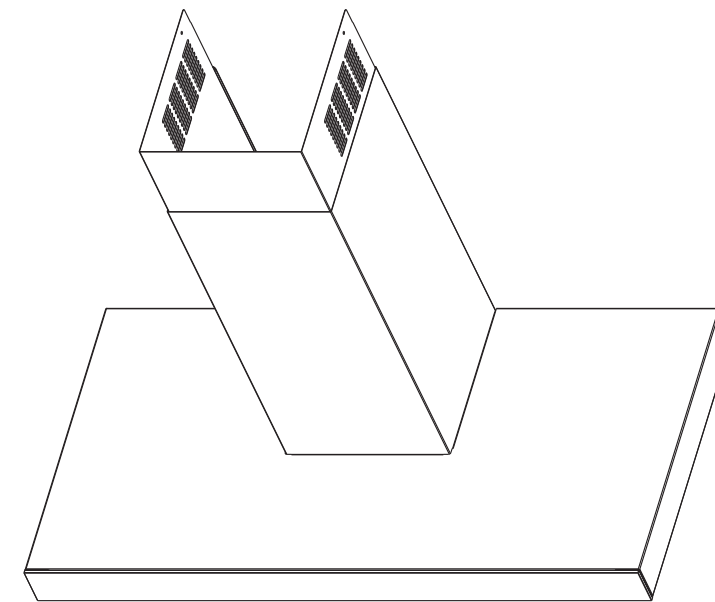
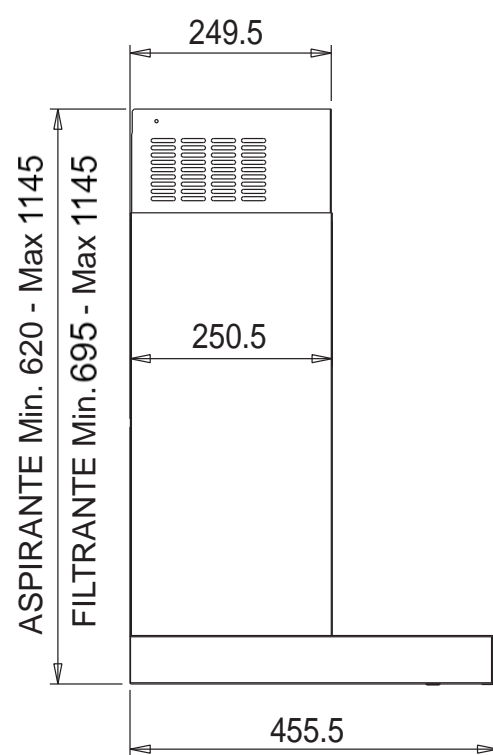


Modificata altezza camini e uscita aria (Bellagamba).
 Aggiunta versione 60 e 70 (Bellagamba).



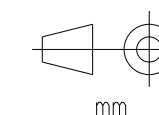
DATA	MODIF. NO	DESCRIZIONE MODIFICA	DISEGNATO DA	ESP. MOD.
DATE	MODIF. NO	MODIFICATION DESCRIPTION	DRAWN BY	

Conforme alla Direttiva 2002/95/EC (RoHS)
 Compliant with Directive 2002/95/EC (RoHS)

MODELLO MODEL	SPOT NG H6 TC (2 LED - 2 H)		DISEGNO N. DRAWING NO.	DW02163		SCALA SCALE	
PARTICOLARE DETAIL	DISEGNO INGOMBRO		REL LEVEL REL LEVEL			DATA DATE	13.10.14
AREA AREA	[. 0]	CAP. TEC. TEC. SPEC.	SPESS. TCKN	[. 1]	REVISIONE REVISION	ITERAZIONE ITERATION	DISEGNATO DA DRAWN BY
				A		1	DONATI



www.elica.com



QUOTE SENZA TOLLERANZA TOLLERANCE UNLESS OTHERWISE STATED

LUNGH. E DIAM. LENGHT AND DIAM.	0 - 5	>5 - 10	>10 - 18	>18 - 30	>30 - 50	>50 - 80	>80 - 120	>120 - 180	>180 - 250	>250 - 315	>315 - 400	>400 - 500	>500
	±0.10	±0.15	±0.20	±0.25	±0.30	±0.35	±0.40	±0.45	±0.50	±0.55	±0.60	±0.65	±0.75

ANGOLI
Angles
±0°30'

QUOTA PRIMARIA
PRIMARY DIMENSION
XX

ELABORATO CON SISTEMA CAD
DESIGNED BY CAD SYSTEM